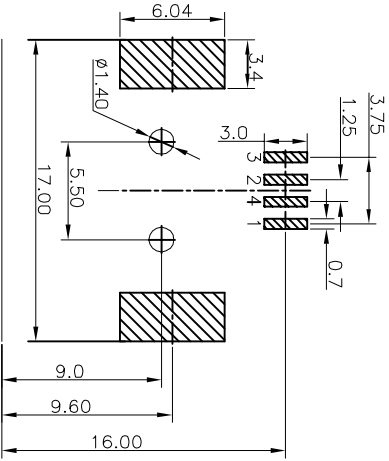
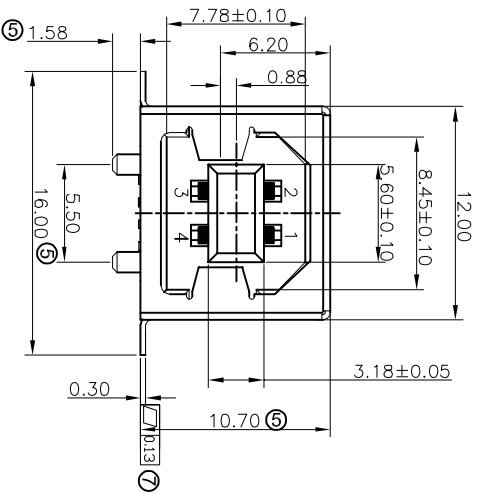
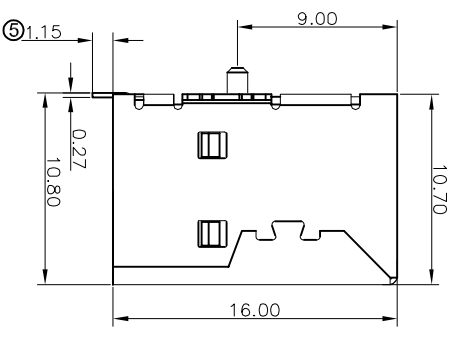
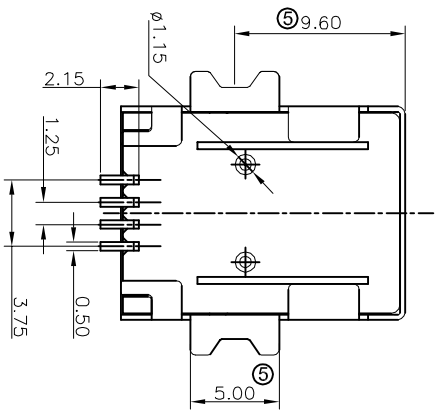


® USB2.0 COMPLIANT



RECOMMENDED P.C.B LAYOUT
(TOLERANCE:±0.05)



- NOTES:**
1. Material:
 ® 1.1 Housing: PA9T UL94V-0, White Color
 1.2 Shell: Brass
 1.3 Contact :Phosphor Bronze
 2. FINISH:
 2.1 Contact Area: Gold Flash
 Solder Area: Tin Plated
 Under: Ni Plated
 ® 2.2 Shell: Ni Plated 50u"~80 u"
3. MECHANICAL:
 3.1 Mating Force: 3.57kgf Max.
 3.2 Unmating Force: 1.02kgf Min
 3.3 Durability: 1500 cycles Min
 4. ELECTRICAL:
 4.1 Current Rating: 1.5A
 4.2 Dielectric Strength: 500V AC FOR 1 MINUTE
 4.3 Contact Resistance: 30mΩ Max
 4.4 Insulation Resistance: 1000 MΩ Min
 5. Operating temperature: -55°C TO +85°C
 6. PACKING:
 A-USB B/SMT: Tray
 A-USB B/SMT-R: Tape&Reel

RoHS compliant
Unit: mm

| Scale | Free | ⑩ | ⑪ | ⑫ | ⑬ | ⑭ | ⑮ | ⑯ | ⑰ | ⑱ | ⑲ | ⑳ | ㉑ | ㉒ | ㉓ | ㉔ | ㉕ | ㉖ | ㉗ | ㉘ | ㉙ | ㉚ | ㉛ | ㉜ | ㉝ | ㉞ | ㉟ | ㊱ | ㊲ | ㊳ | ㊴ | ㊵ | ㊶ | ㊷ | ㊸ | ㊹ | ㊺ | ㊻ | ㊼ | ㊽ | ㊾ | ㊿ |
|------------|--------------|---|---|---|---|---|---|---|---|---|---|---|---|---|---|---|---|---|---|---|---|---|---|---|---|---|---|---|---|---|---|---|---|---|---|---|---|---|---|---|---|---|
| TOLERANCE | Free | ⑩ | ⑪ | ⑫ | ⑬ | ⑭ | ⑮ | ⑯ | ⑰ | ⑱ | ⑲ | ⑳ | ㉑ | ㉒ | ㉓ | ㉔ | ㉕ | ㉖ | ㉗ | ㉘ | ㉙ | ㉚ | ㉛ | ㉜ | ㉝ | ㉞ | ㉟ | ㊱ | ㊲ | ㊳ | ㊴ | ㊵ | ㊶ | ㊷ | ㊸ | ㊹ | ㊺ | ㊻ | ㊼ | ㊽ | ㊾ | ㊿ |
| X.X | ±0.5 | ⑩ | ⑪ | ⑫ | ⑬ | ⑭ | ⑮ | ⑯ | ⑰ | ⑱ | ⑲ | ⑳ | ㉑ | ㉒ | ㉓ | ㉔ | ㉕ | ㉖ | ㉗ | ㉘ | ㉙ | ㉚ | ㉛ | ㉜ | ㉝ | ㉞ | ㉟ | ㊱ | ㊲ | ㊳ | ㊴ | ㊵ | ㊶ | ㊷ | ㊸ | ㊹ | ㊺ | ㊻ | ㊼ | ㊽ | ㊾ | ㊿ |
| X.XX | ±0.3 | ⑩ | ⑪ | ⑫ | ⑬ | ⑭ | ⑮ | ⑯ | ⑰ | ⑱ | ⑲ | ⑳ | ㉑ | ㉒ | ㉓ | ㉔ | ㉕ | ㉖ | ㉗ | ㉘ | ㉙ | ㉚ | ㉛ | ㉜ | ㉝ | ㉞ | ㉟ | ㊱ | ㊲ | ㊳ | ㊴ | ㊵ | ㊶ | ㊷ | ㊸ | ㊹ | ㊺ | ㊻ | ㊼ | ㊽ | ㊾ | ㊿ |
| X.XXX | ±0.2 | ⑩ | ⑪ | ⑫ | ⑬ | ⑭ | ⑮ | ⑯ | ⑰ | ⑱ | ⑲ | ⑳ | ㉑ | ㉒ | ㉓ | ㉔ | ㉕ | ㉖ | ㉗ | ㉘ | ㉙ | ㉚ | ㉛ | ㉜ | ㉝ | ㉞ | ㉟ | ㊱ | ㊲ | ㊳ | ㊴ | ㊵ | ㊶ | ㊷ | ㊸ | ㊹ | ㊺ | ㊻ | ㊼ | ㊽ | ㊾ | ㊿ |
| DIM | TOL | ⑩ | ⑪ | ⑫ | ⑬ | ⑭ | ⑮ | ⑯ | ⑰ | ⑱ | ⑲ | ⑳ | ㉑ | ㉒ | ㉓ | ㉔ | ㉕ | ㉖ | ㉗ | ㉘ | ㉙ | ㉚ | ㉛ | ㉜ | ㉝ | ㉞ | ㉟ | ㊱ | ㊲ | ㊳ | ㊴ | ㊵ | ㊶ | ㊷ | ㊸ | ㊹ | ㊺ | ㊻ | ㊼ | ㊽ | ㊾ | ㊿ |
| ANG. ° | ±5° | ⑩ | ⑪ | ⑫ | ⑬ | ⑭ | ⑮ | ⑯ | ⑰ | ⑱ | ⑲ | ⑳ | ㉑ | ㉒ | ㉓ | ㉔ | ㉕ | ㉖ | ㉗ | ㉘ | ㉙ | ㉚ | ㉛ | ㉜ | ㉝ | ㉞ | ㉟ | ㊱ | ㊲ | ㊳ | ㊴ | ㊵ | ㊶ | ㊷ | ㊸ | ㊹ | ㊺ | ㊻ | ㊼ | ㊽ | ㊾ | ㊿ |
| Angle | TOL | ⑩ | ⑪ | ⑫ | ⑬ | ⑭ | ⑮ | ⑯ | ⑰ | ⑱ | ⑲ | ⑳ | ㉑ | ㉒ | ㉓ | ㉔ | ㉕ | ㉖ | ㉗ | ㉘ | ㉙ | ㉚ | ㉛ | ㉜ | ㉝ | ㉞ | ㉟ | ㊱ | ㊲ | ㊳ | ㊴ | ㊵ | ㊶ | ㊷ | ㊸ | ㊹ | ㊺ | ㊻ | ㊼ | ㊽ | ㊾ | ㊿ |
| Id. | Modification | ⑩ | ⑪ | ⑫ | ⑬ | ⑭ | ⑮ | ⑯ | ⑰ | ⑱ | ⑲ | ⑳ | ㉑ | ㉒ | ㉓ | ㉔ | ㉕ | ㉖ | ㉗ | ㉘ | ㉙ | ㉚ | ㉛ | ㉜ | ㉝ | ㉞ | ㉟ | ㊱ | ㊲ | ㊳ | ㊴ | ㊵ | ㊶ | ㊷ | ㊸ | ㊹ | ㊺ | ㊻ | ㊼ | ㊽ | ㊾ | ㊿ |
| Date | Name | ⑩ | ⑪ | ⑫ | ⑬ | ⑭ | ⑮ | ⑯ | ⑰ | ⑱ | ⑲ | ⑳ | ㉑ | ㉒ | ㉓ | ㉔ | ㉕ | ㉖ | ㉗ | ㉘ | ㉙ | ㉚ | ㉛ | ㉜ | ㉝ | ㉞ | ㉟ | ㊱ | ㊲ | ㊳ | ㊴ | ㊵ | ㊶ | ㊷ | ㊸ | ㊹ | ㊺ | ㊻ | ㊼ | ㊽ | ㊾ | ㊿ |
| 12.12.2016 | Winnie | ⑩ | ⑪ | ⑫ | ⑬ | ⑭ | ⑮ | ⑯ | ⑰ | ⑱ | ⑲ | ⑳ | ㉑ | ㉒ | ㉓ | ㉔ | ㉕ | ㉖ | ㉗ | ㉘ | ㉙ | ㉚ | ㉛ | ㉜ | ㉝ | ㉞ | ㉟ | ㊱ | ㊲ | ㊳ | ㊴ | ㊵ | ㊶ | ㊷ | ㊸ | ㊹ | ㊺ | ㊻ | ㊼ | ㊽ | ㊾ | ㊿ |
| 08.09.2016 | Jesse | ⑩ | ⑪ | ⑫ | ⑬ | ⑭ | ⑮ | ⑯ | ⑰ | ⑱ | ⑲ | ⑳ | ㉑ | ㉒ | ㉓ | ㉔ | ㉕ | ㉖ | ㉗ | ㉘ | ㉙ | ㉚ | ㉛ | ㉜ | ㉝ | ㉞ | ㉟ | ㊱ | ㊲ | ㊳ | ㊴ | ㊵ | ㊶ | ㊷ | ㊸ | ㊹ | ㊺ | ㊻ | ㊼ | ㊽ | ㊾ | ㊿ |
| 09.07.2015 | Jesse | ⑩ | ⑪ | ⑫ | ⑬ | ⑭ | ⑮ | ⑯ | ⑰ | ⑱ | ⑲ | ⑳ | ㉑ | ㉒ | ㉓ | ㉔ | ㉕ | ㉖ | ㉗ | ㉘ | ㉙ | ㉚ | ㉛ | ㉜ | ㉝ | ㉞ | ㉟ | ㊱ | ㊲ | ㊳ | ㊴ | ㊵ | ㊶ | ㊷ | ㊸ | ㊹ | ㊺ | ㊻ | ㊼ | ㊽ | ㊾ | ㊿ |
| 17.01.2014 | Winnie | ⑩ | ⑪ | ⑫ | ⑬ | ⑭ | ⑮ | ⑯ | ⑰ | ⑱ | ⑲ | ⑳ | ㉑ | ㉒ | ㉓ | ㉔ | ㉕ | ㉖ | ㉗ | ㉘ | ㉙ | ㉚ | ㉛ | ㉜ | ㉝ | ㉞ | ㉟ | ㊱ | ㊲ | ㊳ | ㊴ | ㊵ | ㊶ | ㊷ | ㊸ | ㊹ | ㊺ | ㊻ | ㊼ | ㊽ | ㊾ | ㊿ |
| 19.08.2013 | Winnie | ⑩ | ⑪ | ⑫ | ⑬ | ⑭ | ⑮ | ⑯ | ⑰ | ⑱ | ⑲ | ⑳ | ㉑ | ㉒ | ㉓ | ㉔ | ㉕ | ㉖ | ㉗ | ㉘ | ㉙ | ㉚ | ㉛ | ㉜ | ㉝ | ㉞ | ㉟ | ㊱ | ㊲ | ㊳ | ㊴ | ㊵ | ㊶ | ㊷ | ㊸ | ㊹ | ㊺ | ㊻ | ㊼ | ㊽ | ㊾ | ㊿ |
| 07.06.2013 | Winnie | ⑩ | ⑪ | ⑫ | ⑬ | ⑭ | ⑮ | ⑯ | ⑰ | ⑱ | ⑲ | ⑳ | ㉑ | ㉒ | ㉓ | ㉔ | ㉕ | ㉖ | ㉗ | ㉘ | ㉙ | ㉚ | ㉛ | ㉜ | ㉝ | ㉞ | ㉟ | ㊱ | ㊲ | ㊳ | ㊴ | ㊵ | ㊶ | ㊷ | ㊸ | ㊹ | ㊺ | ㊻ | ㊼ | ㊽ | ㊾ | ㊿ |



ASS 1122 CO

rev10

SHEET 1/2

1 2 3 4 5 6 7

| | | | | | | | |
|---|---|---|---|---|---|---|---|
| A | B | C | D | E | F | G | H |
|---|---|---|---|---|---|---|---|

1

2

3

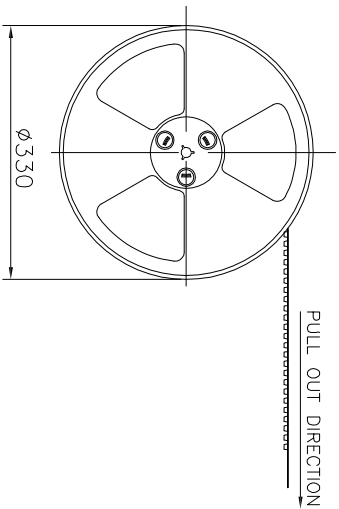
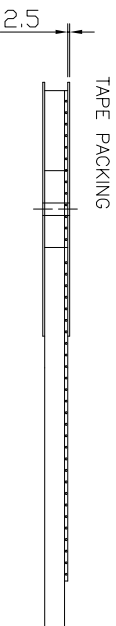
4

5

6

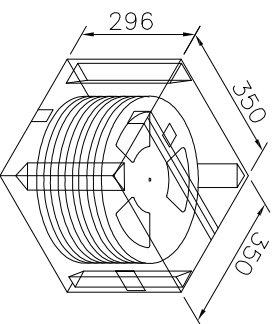
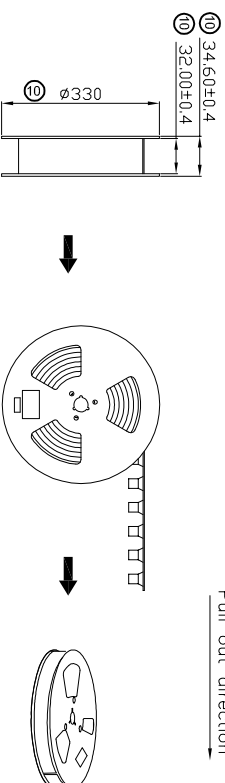
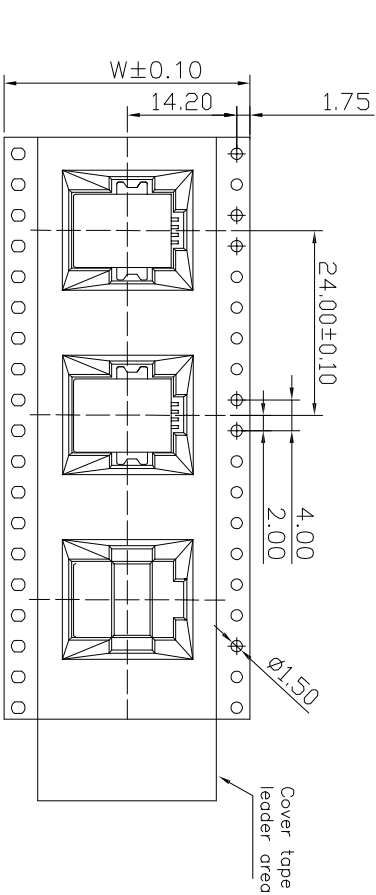
7

⑨



(SC 1:20)

| | | | | |
|------|----|-------|----------|------------|
| Pin. | W | Pcs/R | R/Carton | Pcs/Carton |
| 04 | 32 | 150 | 7 | 1050 |



NOTES:

1. Material: White
2. Thickness: 0.50±0.05mm
3. Component load per 13" reel: 150pcs
4. Carton Size: 350*296(mm)

ROHS compliant

Unit: mm

| Scale | Free | ⑩ | ⑪ | ⑫ | ⑬ | ⑭ | ⑮ | ⑯ | ⑰ | ⑱ | ⑲ | ⑳ |
|-----------|------|---|---|------------|--------|----------|------------|---------|---|---|---|---|
| TOLERANCE | | | | | | | | | | | | |
| X.X | ±0.5 | ⑨ | Add the dimension of reel | 12.12.2016 | Winnie | | | | | | | |
| X.XX | ±0.3 | | Add page 2 | 08.09.2016 | Jesse | Drawn | 27.03.2007 | Hellwig | | | | |
| X.XXX | ±0.2 | ⑧ | Change the Insulator material | 09.07.2015 | Jesse | Approved | 12.12.2016 | Winnie | | | | |
| DIM | TOL | ⑦ | Add the co-planarity&plating spec for the shell | 17.01.2014 | Winnie | | | | | | | |
| ANG.° | ±5° | ⑥ | Update | 19.08.2013 | Winnie | | | | | | | |
| Angle | TOL | ⑤ | Update | 07.06.2013 | Winnie | | | | | | | |
| | | | Modification | | | | | | | | | |
| | | | | | | | | | | | | |

Customer-No.

ASSMANN WSW-No. A-USB B/SMT
A-USB B/SMT-R

Drawing-No.

ASS 1122 CO rev10

Replace

SHEET
2/2

1

2

3

4

5

6

7

H

G

F

E

D

C

B

A

H

G

F

E

D

C

B

A