

CUSTOMER TERMINAL	RoHS	LEAD(Pb)-FREE
Sn96%, Ag4%	Yes	Yes



ELECTRICAL SPECIFICATIONS @ 25°C unless otherwise noted:

PARAMETER	TEST CONDITIONS	VALUE
⑥B D.C. RESISTANCE	1-3 @20°C	0.275 ohms max.
⑥B D.C. RESISTANCE	6-4 @20°C	0.343 ohms max.
INDUCTANCE	1-3 100kHz, 10mVAC, Ls	384uH ±30%
DIELECTRIC	1-6 6250Vrms, 1 second	5000Vrms, 1 minute
TURNS RATIO	(6-4):(1-3)	1.38:1, ±1%

GENERAL SPECIFICATIONS:

OPERATING TEMPERATURE RANGE: -40°C to +125°C including temp rise.

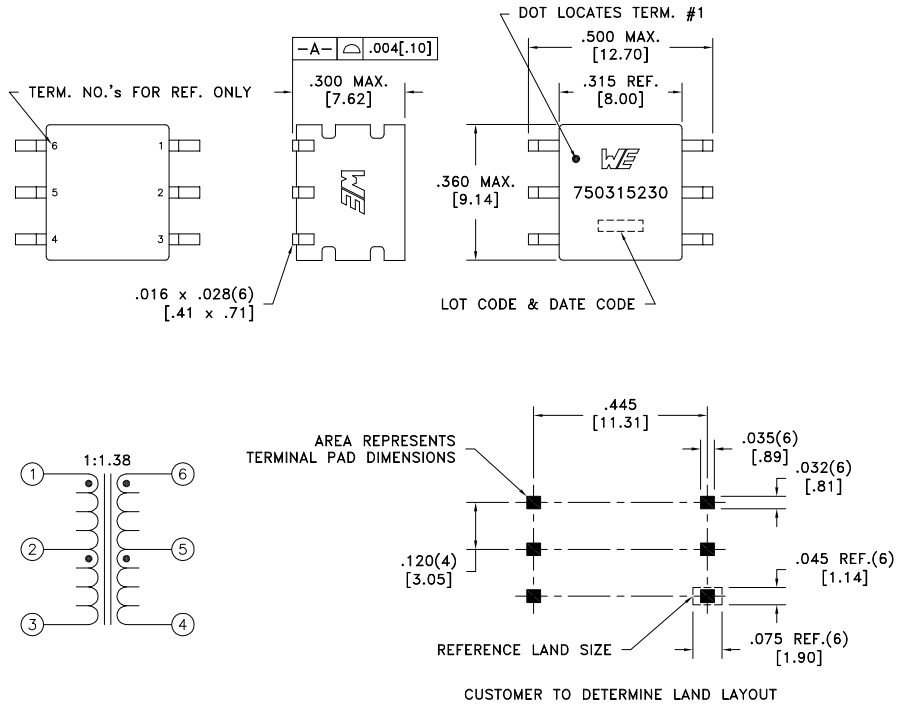
CURRENT RATING: 150mADC

VOLTAGE-TIME: 10.7VuS

Designed to comply with the following requirements as defined by IEC60950-1, EN60950-1, UL60950-1/CSA60950-1 and AS/NZS60950.1:

- ⑥B - Reinforced insulation for a primary circuit at a working voltage of 265Vrms, 400Vpeak, Overvoltage Category II.

COPLANARITY: All 6 terminals must lie on a plane within .004 [.10] of Surface A after lead tinning.



Wire insulation & RoHS status not affected by wire color.
Wire insulation color may vary depending on availability.

REV.	DATE	Packaging Specifications Method: Tape & Reel PKG-0948 www.we-online.com/midcom	CONVENTION PLACEMENT
6B	1/18		
6A	3/15	SEE REVISION SHEET FOR REVISION LEVEL	

Tolerances unless otherwise specified:
Angles: ±1° Decimals: ±.005 [.13]
Fractions: ±1/64 Footprint: ±.005 [.13]

This drawing is dual dimensioned. Dimensions in brackets are in millimeters.

DRAWING TITLE
TRANSFORMER

eiSos p/n: 750315230

PART NO.
750315230

SPECIFICATION SHEET 1 OF 1