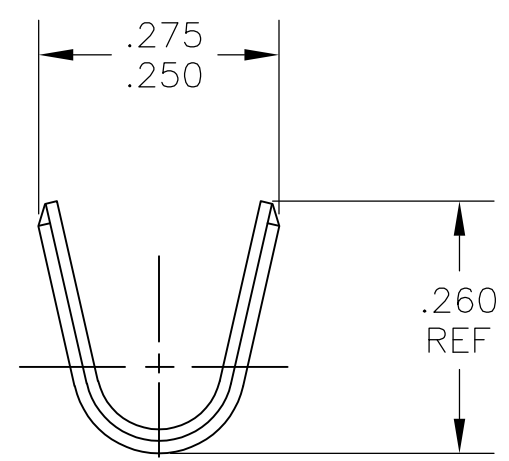
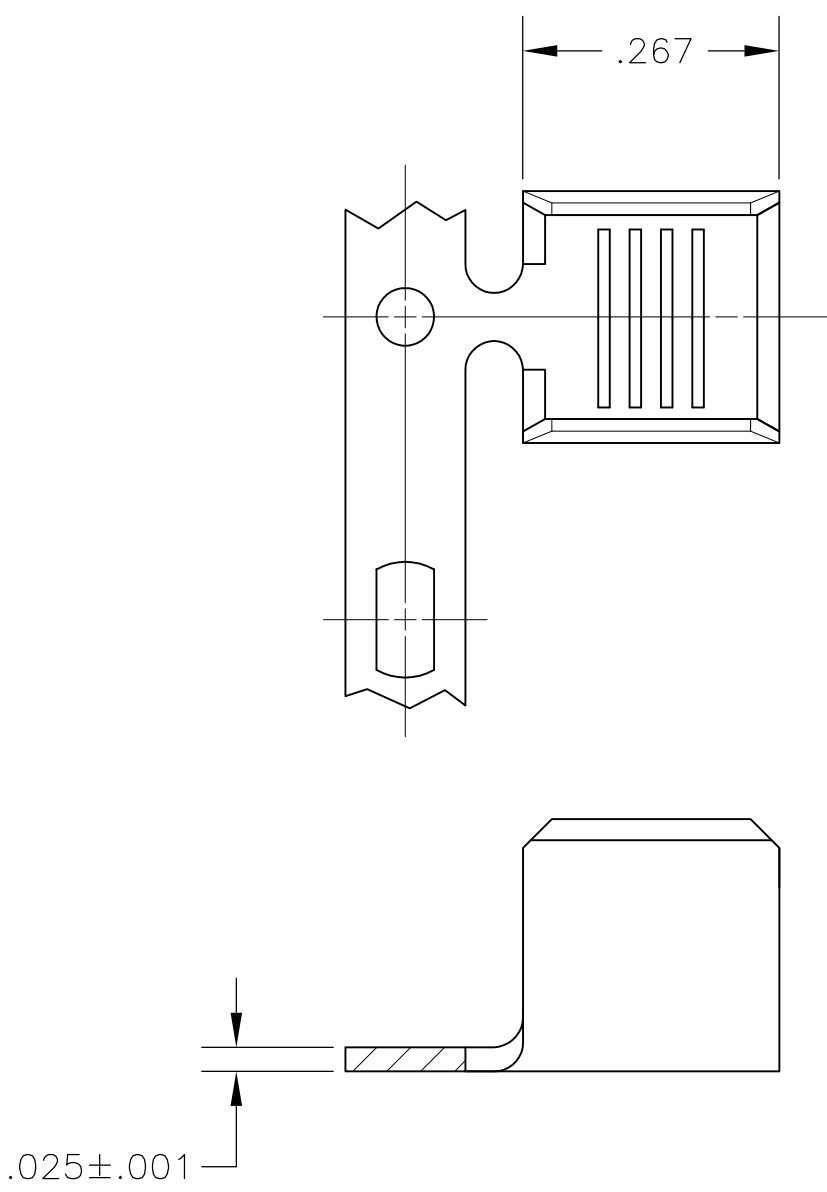


THIS DRAWING IS UNPUBLISHED. RELEASED FOR PUBLICATION
 © COPYRIGHT BY TYCO ELECTRONICS CORPORATION. ALL RIGHTS RESERVED.

LOC	DIST	REVISIONS			
P	LTR	DESCRIPTION	DATE	DWN	APVD
	C1	REVISED PER ECO-09-024717	04NOV09	KK	AEG

- 1 CONTINUOUS STRIP ON REEL.
 - 2 CRIMP WIDTH—.180, F TYPE
 - 3 CRIMP HEIGHT $\pm .002 = \frac{CMA+23100}{285700}$
 - 4 WIRE RANGE IS 8,500-14,000 CMA
- △5 OBSOLETE PARTS: OBSOLETE CIS STREAMLINING PER D.RENAUD/D.SINISI



△5 OBSOLETE	.000080 MIN TIN PLATE	1217967-2
		1217967-1
	FINISH	PART NO

THIS DRAWING IS A CONTROLLED DOCUMENT.		DWN jr_ruth 09JUN03	Tyco Electronics Corporation Harrisburg, Pa 17105-3608	
DIMENSIONS: INCHES	TOLERANCES UNLESS OTHERWISE SPECIFIED:	CHK G PORTA 09JUN03	NAME SPLICE	
	0 PLC ± -	APVD G PORTA 09JUN03	PRODUCT SPEC	
	1 PLC ± -	PRODUCT SPEC	-	
	2 PLC ± .010	APPLICATION SPEC	-	
	3 PLC ± -	WEIGHT	-	
	4 PLC ± -		SIZE	CAGE CODE
	ANGLES ± -		A3	00779
MATERIAL H04 BRASS	FINISH SEE TABLE		DRAWING NO	RESTRICTED TO
			C-1217967	-
CUSTOMER DRAWING			SCALE	SHEET
			5:1	1 OF 1
			REV	C1