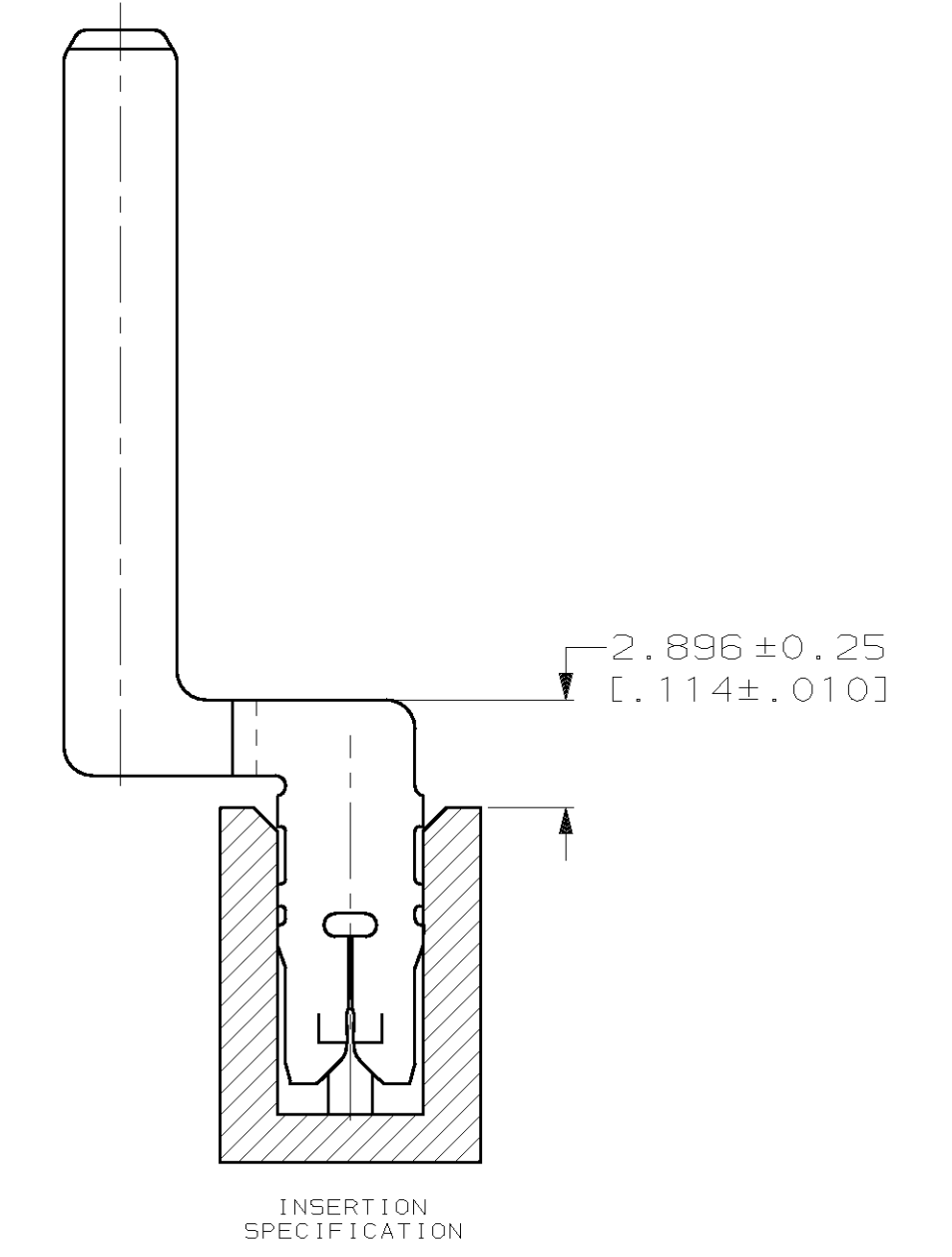
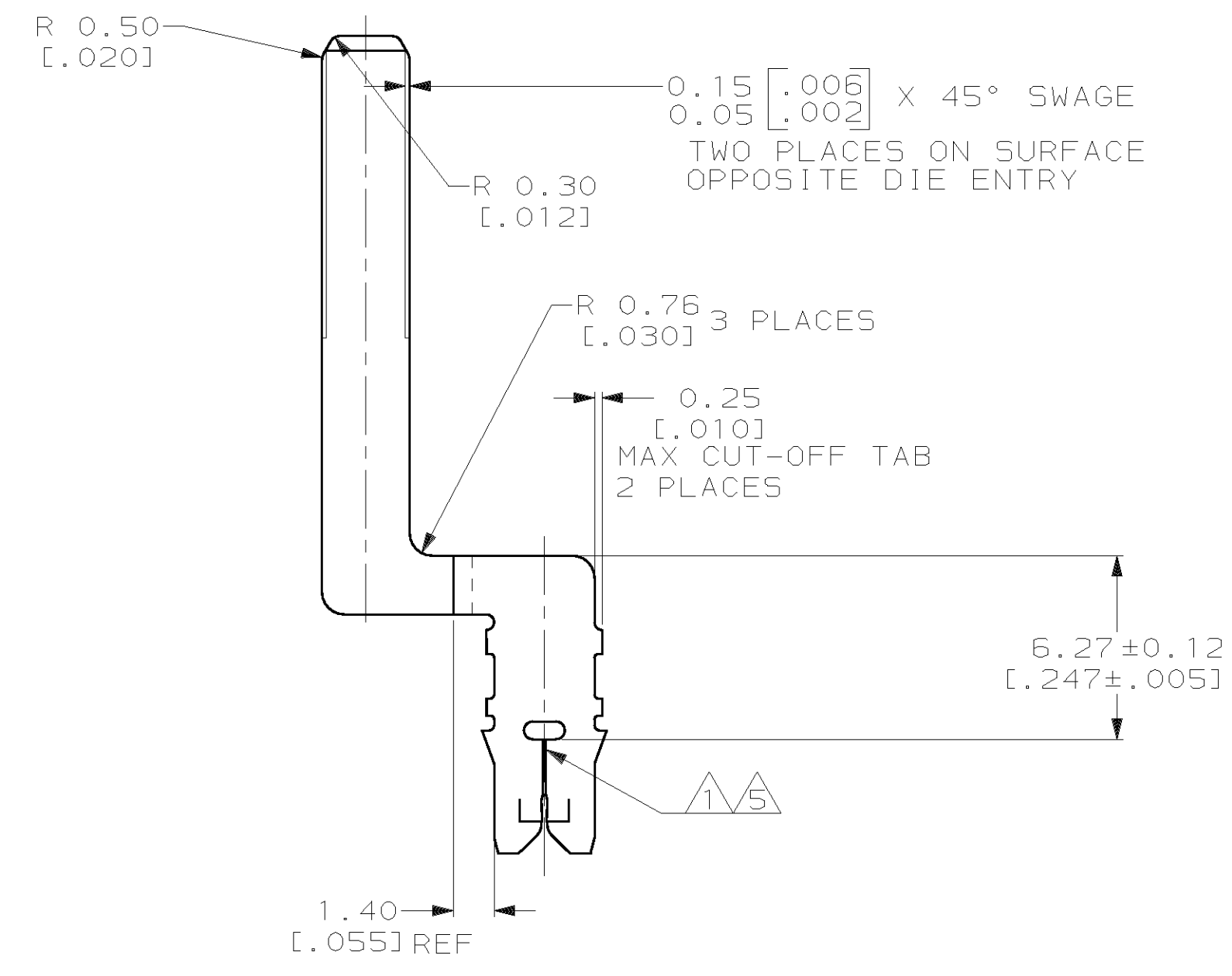
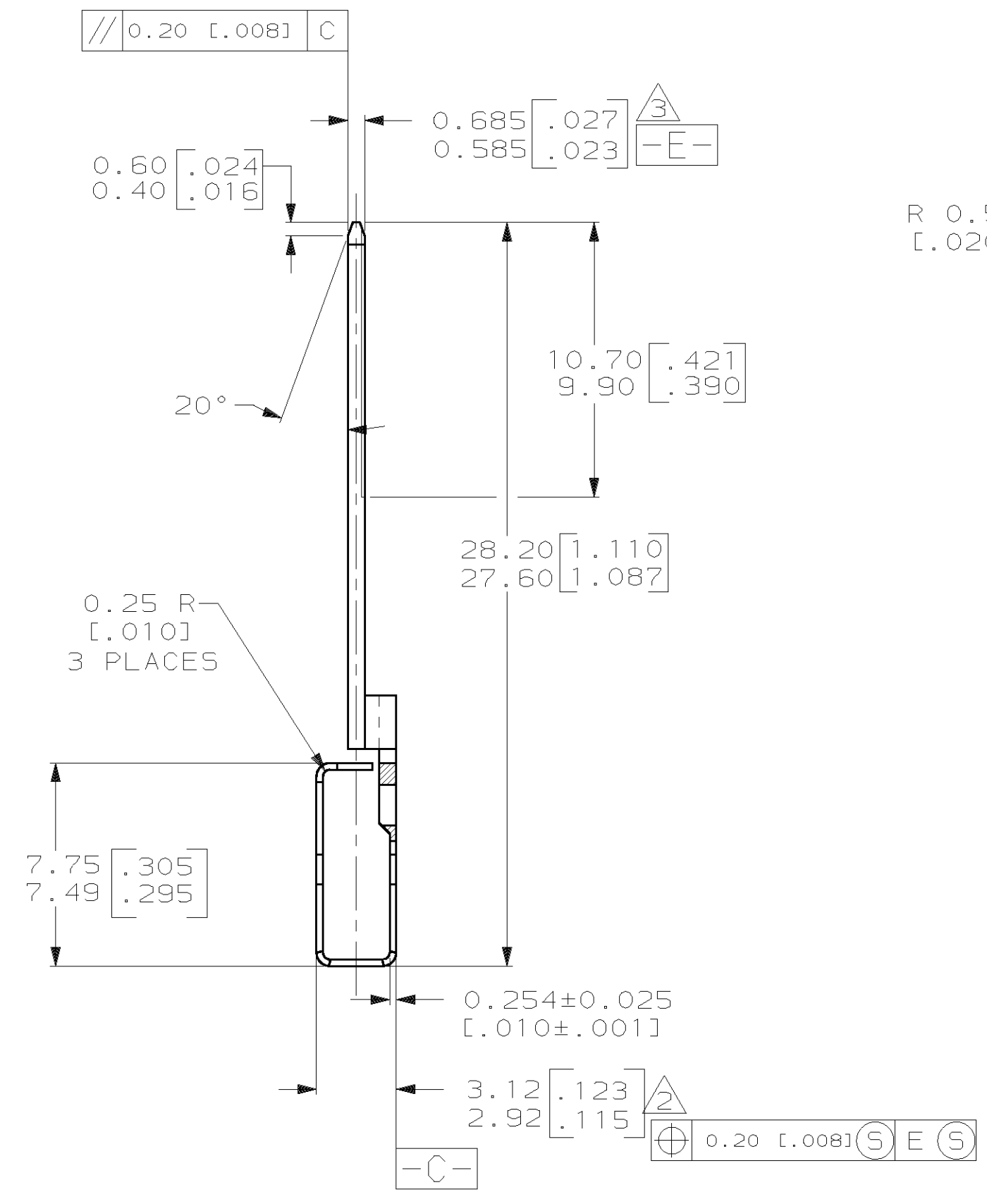
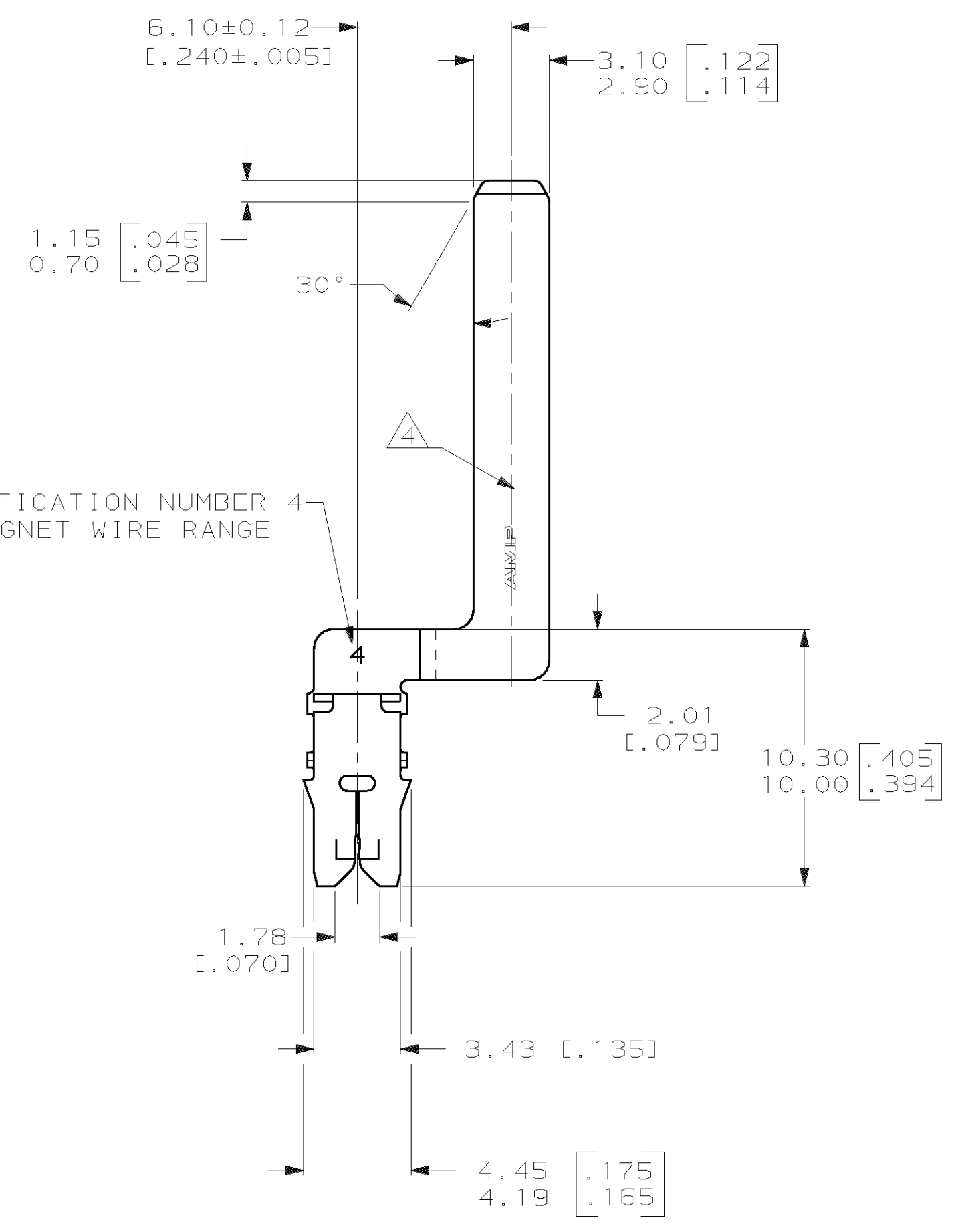
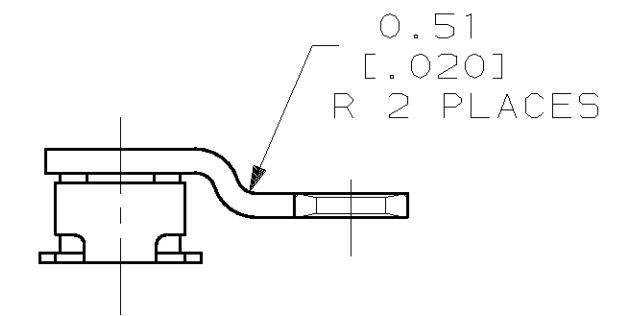
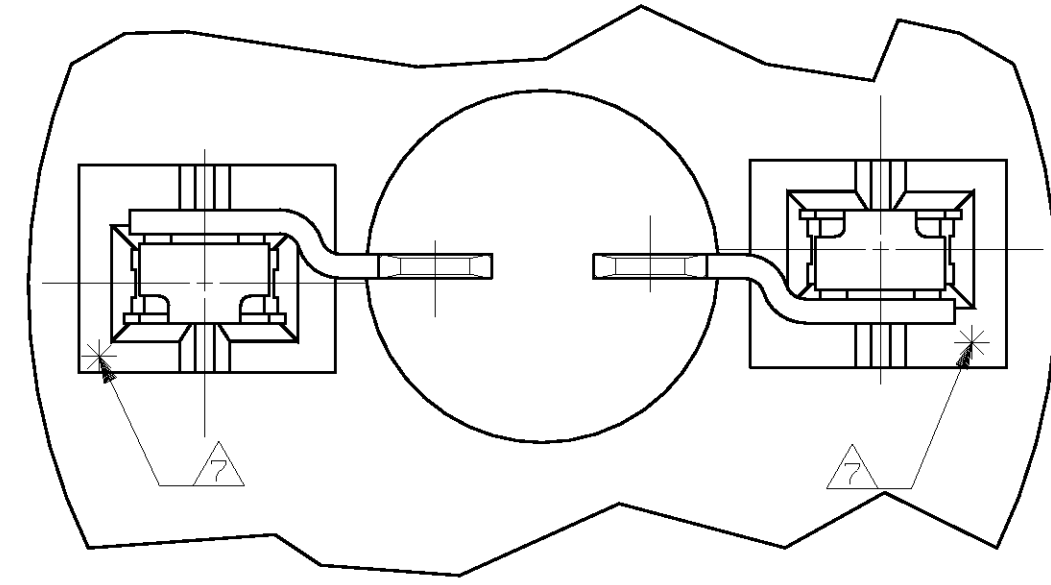


LOC		DIST		REVISIONS			
AF	50	TR	LTR	DESCRIPTION	DATE	OWN	APVD
		A		REV PER 061A-0055-98	5FE898	RG	NN

- 1 SLOT TERMINATES A SINGLE 0.20mm DIA [#32] AWG COPPER MAGNET WIRE.
- 2 BOX TO MEET THIS DIMENSION WHEN INSERTED INTO A CAVITY 3.12 [.123] DEEP.
- 3 SYMMETRY TO BE MEASURED AT THE "NOSE" OF THE BOX.
- 4 MEASURE PLATING THICKNESS ON THE TAB, FORMED SIDE OF THE TERMINAL.
- 5 SLOT MUST ACCEPT A 0.089 [.0035] DIA PIN GAGE; SLOT MUST NOT ACCEPT A 0.18 [.007] DIA PIN GAGE. MEASURE ONE BEAM AT A TIME.
- 6 0.00254-0.006 [.000100-.000250] THICK TIN PLATE
- 7 POINT OF MEASUREMENT, LOCATED APPROXIMATELY AS SHOWN



1217032-1
PART NUMBER

THIS DRAWING IS A CONTROLLED DOCUMENT.		DWN R. GRZYBOWSKI 24NOV97	AMP Incorporated Harrisburg, PA 17105-3608	
DIMENSIONS mm [INCHES]		CHK M. S. FEHER 24NOV97	AMP	
TOLERANCES UNLESS OTHERWISE SPECIFIED:		APVD NELSON F. NEFF 24NOV97	NAME TAB, 3.00 [.118] CONNECTING, LOOSE PIECE, MAG-MATE™	
0 PLC ±	1 PLC ±	PRODUCT SPEC	108-2012	
2 PLC ±0.18 (.007)	3 PLC ±	APPLICATION SPEC	114-2046	
4 PLC ±	ANGLES 43°	SIZE	A1	00779
MATERIAL H04 PRE-MILLED BRASS	FINISH	WEIGHT	1217032	
		CUSTOMER DRAWING	SCALE	5:1
		SHEET		1 OF 1
		REV		A